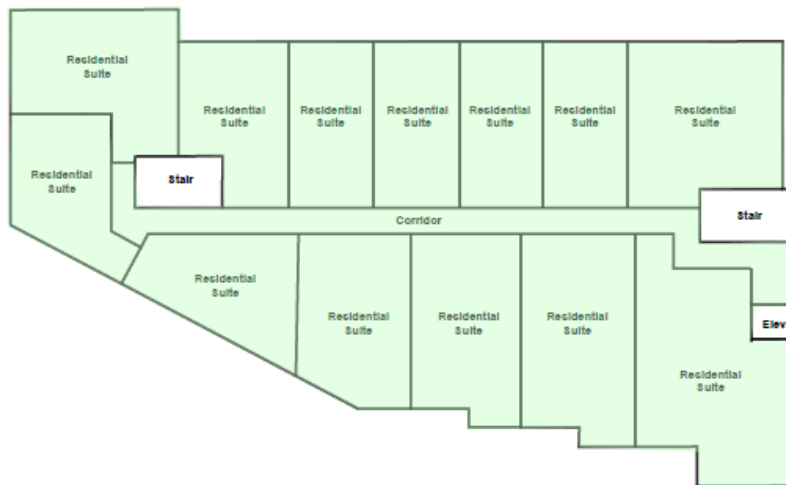


BUILDING CODE DEFINITIONS – EXIT AND EGRESS

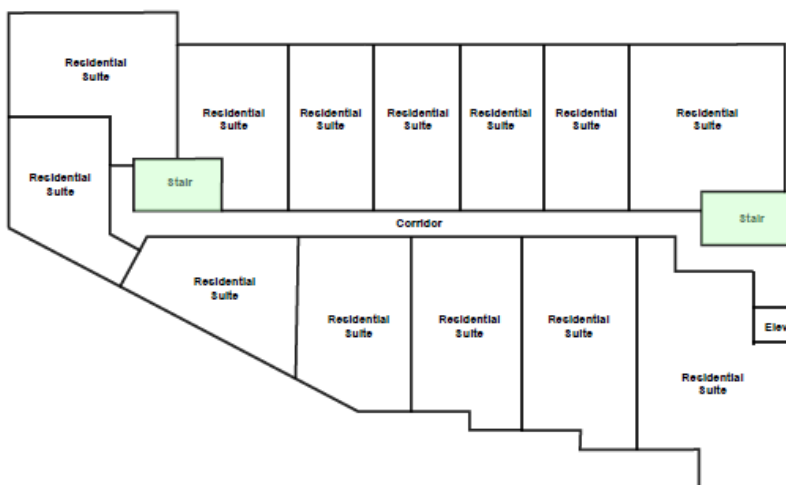
Access to exit means that part of a *means of egress* within a *floor area* that provides access to an *exit* serving the *floor area*.

Translation: the path of travel from where you are now to an exit door.



Exit means that part of a *means of egress*, including doorways, that leads from the *floor area* it serves to a separate *building*, an open public thoroughfare, or an exterior open space protected from fire exposure from the *building* and having access to an open public thoroughfare.

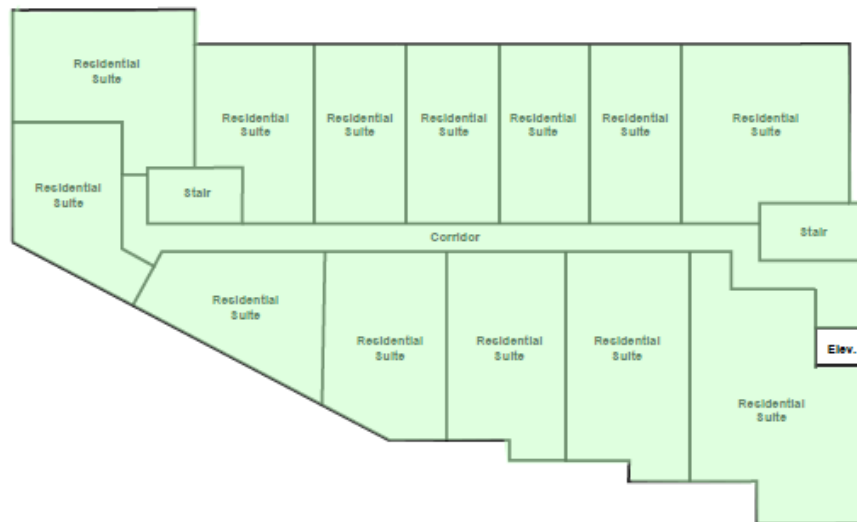
Translation: the route from the point at which you leave the floor area (and move into an interior exit or to the outdoors) until you are away from the building (3m away outdoors or in another building).





Means of egress means a continuous path of travel provided for the escape of persons from any point in a *building* or contained open space to a separate *building*, an open public thoroughfare, or an exterior open space protected from fire exposure from the *building* and having access to an open public thoroughfare. *Means of egress* includes *exits* and *access to exits*.

Translation: the whole enchilada; the path of travel from where you are now until you are away from the building.



3.4.1.4. Types of Exit

1) Subject to the requirements of this Section, an *exit* from any *floor area* shall be one of the following, used singly or in combination:

- a) an exterior doorway,
- b) an exterior passageway,
- c) an exterior ramp,
- d) an exterior stairway,
- e) a fire escape,
- f) a horizontal exit (into another building via door, vestibule, walkway, bridge)
- g) an interior passageway,
- h) an interior ramp, or
- i) an interior stairway.