

BC BUILDING CODE INTERPRETATION COMMITTEE

A joint committee with members representing
AIBC, EGBC, BOABC

File No: 24-0015

INTERPRETATION

Page 1 of 2

Interpretation Date: July 16, 2024

Building Code Edition: BC Building Code 2024

Subject: Measurement of Clear Floor Space Width at a Door

Keywords: Clear floor space, Swinging door

Building Code Reference(s): 3.8.3.6.(14), (15) and (16)

Question:

Where a clear space is required at a door for accessibility per Sentence 3.8.3.6.(14), is the width measured from the door jamb on the hinged side?

Interpretation:

Yes.

Sentence 3.8.3.6.(14) states that the pull side of a swinging door in an accessible path of travel requires a clear and level floor space “of not less than 1700 mm by 1500 mm measured from the hinged side of the door”, with a reference to Note A-3.8.3.6.(14) to (16). Sentences 3.8.3.6.(15) and (16) also contain requirements for clear spaces at doors.

The question relates to whether the width of the required clear area is measured from the hinged side of the door when the door is in the closed position, or the face of the door on the hinged side when the door is in the open position. These two measurements will be different by the thickness of the door and by the distance that the hinges hold the door off the frame.

The excerpt on the next page is one of the sketches in Note A-3.8.3.6.(14) to (16). This interpretation is not intended to reproduce all of those sketches. Please refer to Note A-3.8.3.6.(14) to (16) for a graphic representation of various clear space conditions at doors.



Patrick Shek, P.Eng., CP, FEC, Committee Chair

The views expressed are the consensus of the joint committee with members representing AIBC, EGBC and BOABC, which form the BC Building Code Interpretation Committee. The Building and Safety Standards Branch, Province of BC and the City of Vancouver participate in the committee's proceedings with respect to interpretations of the BC Building Code. The purpose of the committee is to encourage uniform province wide interpretation of the BC Building Code. These views should not be considered as the official interpretation of legislated requirements based on the BC Building Code, as final responsibility for an interpretation rests with the local *Authority Having Jurisdiction*. The views of the joint committee should not be construed as legal advice.

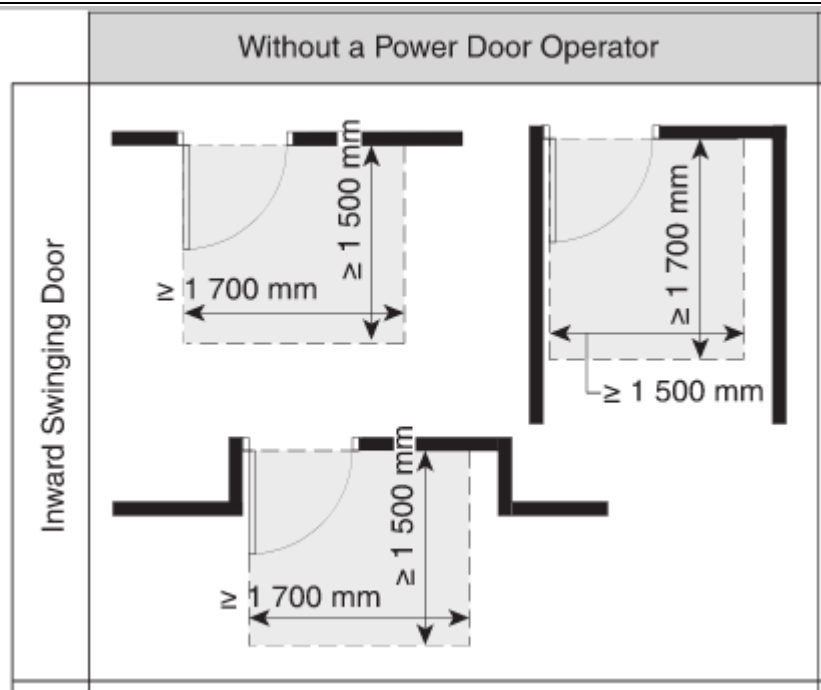
BC BUILDING CODE INTERPRETATION COMMITTEE

A joint committee with members representing
AIBC, EGBC, BOABC

File No: 24-0015

INTERPRETATION

Page 2 of 2



In this sketch and in the other sketches in Note A-3.8.3.6.(14) to (16), the width of the clear floor space is measured from the door jamb, not from the inside face of the open door. The clear space is intended to allow a disabled person to approach the door and to open the door, without their position impeding the opening of the door. The position of the door in the open position is not relevant for this intent because the greatest restriction will be when the door is initially being opened, not when it is fully open. The width of the clear space should be measured from the door jamb as shown in the sketches in Note A-3.8.3.6.(14) to (16).

Patrick Shek, P.Eng., CP, FEC, Committee Chair

The views expressed are the consensus of the joint committee with members representing AIBC, EGBC and BOABC, which form the BC Building Code Interpretation Committee. The Building and Safety Standards Branch, Province of BC and the City of Vancouver participate in the committee's proceedings with respect to interpretations of the BC Building Code. The purpose of the committee is to encourage uniform province wide interpretation of the BC Building Code. These views should not be considered as the official interpretation of legislated requirements based on the BC Building Code, as final responsibility for an interpretation rests with the local *Authority Having Jurisdiction*. The views of the joint committee should not be construed as legal advice.